

POLICE SECTION 30

Staffordshire Police and Newcastle Borough Council have jointly agreed a designated dispersal zone in Newcastle to combat anti-social behaviour.

The dispersal zone, under Section 30 of the Anti-Social Behaviour Act 2003, will cover Newcastle town centre and the outlying streets.

Under the legislation police officers will have additional powers to take action against anyone acting or likely to act in an anti-social manner by directing them out of the designated areas. Those who fail to leave or return, can be arrested and charged with offences under the act.

In addition, those under the age of 16 who are in the area between 9pm and 6am without a responsible adult can be taken home or to another place of safety.

Operation Boycott commenced on the 1st October of this year - Extra officers from Newcastle Local Policing Team have been patrolling the Town Centre targeting those

people who were involved in or intent on causing anti-social behaviour. The operation is in response to a rise in reported incidents of ASB on the town centre and concerns raised by local businesses.



Since the beginning of the operation officers have:

- made 12 arrests
- issues 100 Section 30 warnings /
- sent letters to the parents / guardians of young people
- identified interventions in relation to a number of repeat offenders



COURT RE-OPENING

COURT RE-OPENING

Opens on the 10th December

NORTH STAFFORDSHIRE JUSTICE CENTRE

Newcastle Under Lyme Magistrates Court re-opens on the 10th December 2012 after a £4.5 million pound refurbishment.

The building will be renamed the North Staffordshire Justice Centre and will hear and administer cases from across North Staffordshire. Located on the edge of Newcastle town centre the Justice Centre will provide North Staffordshire with a well equipped modern court building.



9.00am to 4.00pm Monday to Friday.

Two additional court rooms have been added to the building to provide 7 modern court rooms, a new reception point, custody suite, interview rooms and additional office facilities for our partner agencies including the Probation Trust and the Crown Prosecution Service. New and separate waiting facilities have been created for victims and witnesses allowing them to wait in a secure, comfortable and safe environment.

The refurbished building will bring together over a 100 staff, Magistrates and officers from our partner agencies into a single, modern, flexible Justice Centre that will provide a real benefit to the people of Newcastle and North Staffordshire.

This is a great opportunity to market the retail trade to the new court staff and solicitors. Traders are asked to think of ways of marketing in order to reach this new customer base.

An administrative centre has been created on the upper two floors that will accommodate staff transferred from Stoke On Trent Magistrates Court which closes on the 7th December 2012.

The Police are also continuing to ensure that the town centre stays safe with the introduction of a Section 30 (see overleaf)

The building will be open from

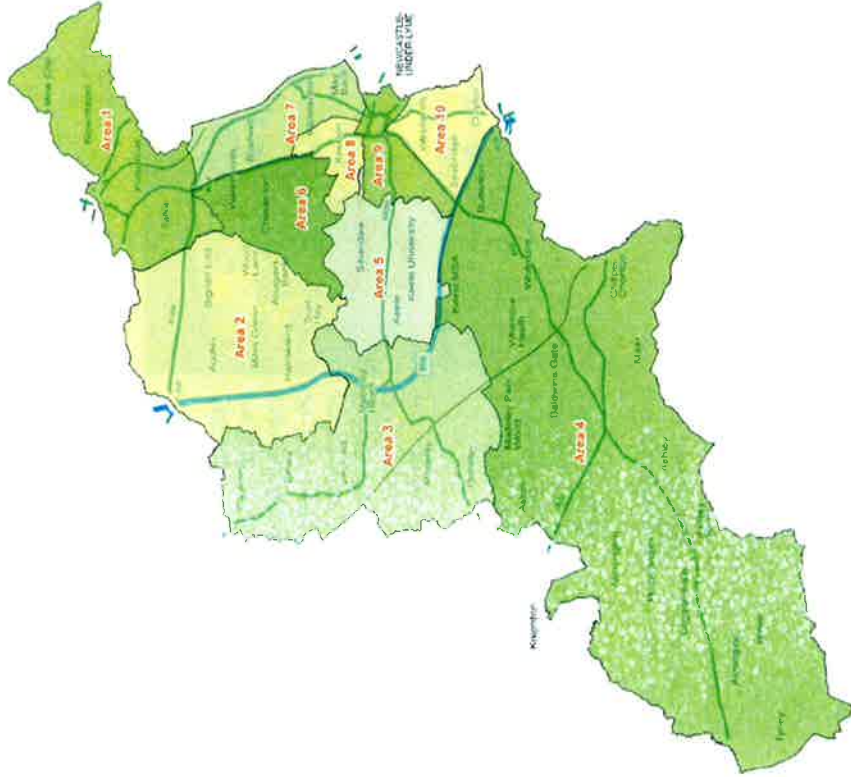


HM Courts & Tribunals Service



Newcastle Partnership – Better Together

The Newcastle Partnership is the sectors to support each other and overarching strategic partnership for the Borough of Newcastle-under-Lyme in Staffordshire. The Partnership has identified two priorities - Growth (Economy and Enterprise) and Vulnerability (Health, Wellbeing and Safety)



Newcastle Partnership sets the strategic vision for the area, however for the process to work effectively it needs to be informed by feedback from the communities it serves. Newcastle Partnership introduced Locality Action Partnerships (LAPs) to increase the involvement of local people and communities in issues that affect their local area and impact on their quality of life.

There are 11 active LAPs covering the areas shown on the map on page 3. (Area 1 contains two LAPs):

LAPs provide an opportunity for the people who live, work or study in each LAP area to discuss common priorities and develop approaches to delivering against these priorities. They further provide opportunities for local agencies to work more effectively together at a local area and be more responsive to the needs of local people.

The Newcastle Partnership comprises the following groups:

Newcastle Partnership Strategic Board – Responsible Authorities Group in relation to the Crime and Disorder Act 1998 (as amended).

- Partnership Delivery Group
- Partnership Action Groups (task and finish)
- Joint Operations Group
- Case Conferences
- Locality Action Partnerships (including the Chairs group)

Newcastle Partnership recognises that the range of complex and inter-linked problems that impact upon the quality of life of local people cannot be effectively tackled by any one agency alone. They require a joined-up approach that can only be delivered in partnership, building from a diverse knowledge base and expertise and aligning collective resources to meet the needs and priorities of the community. There is recognition that more can be achieved in partnership.

For further information on Locality Action Partnerships please contact Irene Lee on 01782 742569 or e-mail

Irene.Lee@newcastle-staffs.gov.uk

For further information on Newcastle Partnership please contact Mark Bailey.